

FLEX - PLUS 1900-4000

Led Strip



Alimentazione / Operating Voltage	24 V
Potenza / Power	20 W/mt
Larghezza Pcb / Width Pcb	10 mm
Altezza / Height Stripe	2 mm
Lunghezza / Length Stripe	5000 mm
Taglio segmento/ Length per Cut	50 mm
N° LED	120 / mt
IP	20
Temperatura esercizio Storage Temperature	- 30° C - + 70°C
Lifetime	L70B20 50000H

	Flusso Luminoso Luminous Flux	Efficienza Efficiency	Colore Luce Led Color
DA-PLUS-1900-4000	1769 lm/mt	135 lm/W	4000 K



Via Cadorna, 40/42
20032 Cormano (MI)
Tel. +39 02 84269630
Fax +39 02 84269631
info@dadalighting.com
www.dadalighting.com

FLEX - PLUS 1900-4000
Led Strip

Light efficiency:



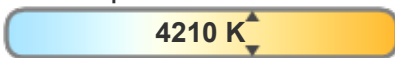
Output: 1769 lm

Light quality:

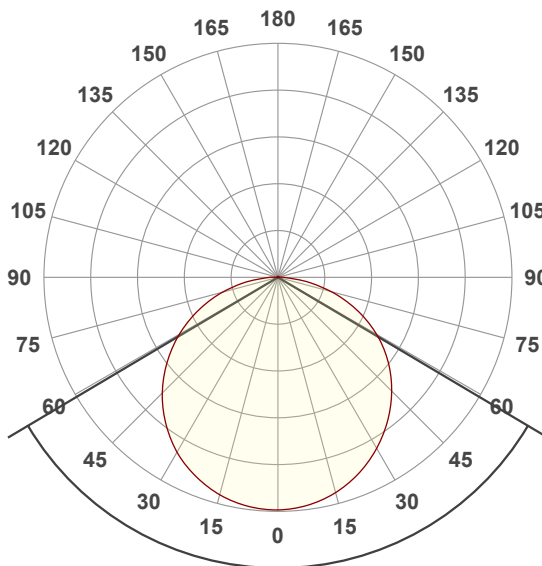


Peak: 569 cd

Color temperature:



Power: 20,0 W
24,0V @ 0,833A



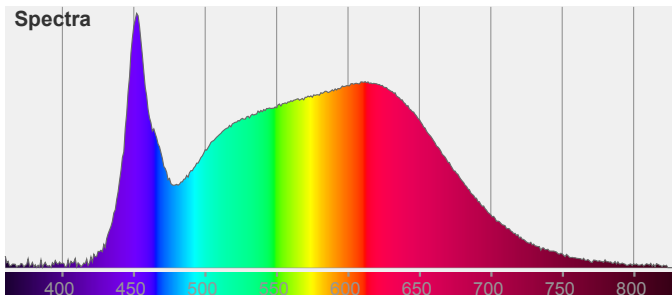
Beam angle **118,6°**

Color



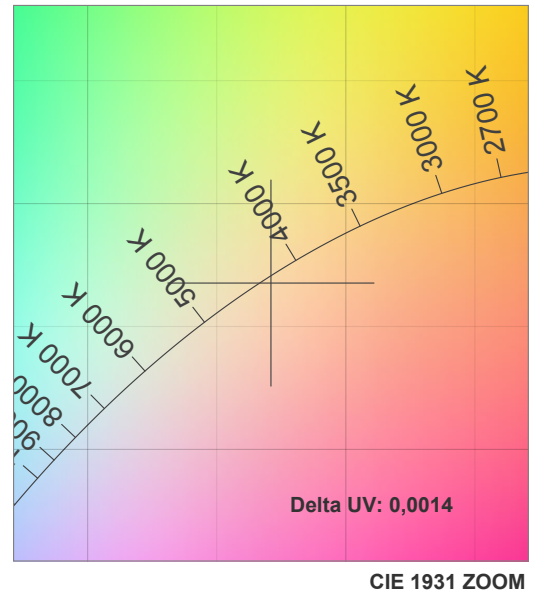
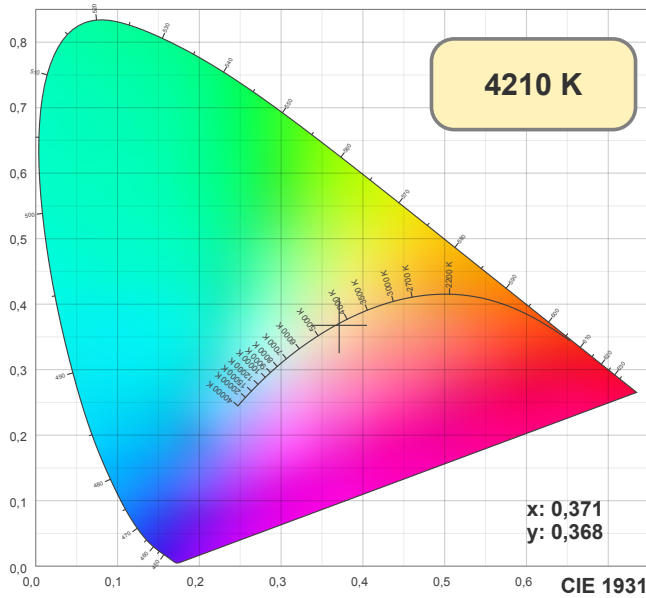
CIE1931
x: 0,371
y: 0,368

Spectra

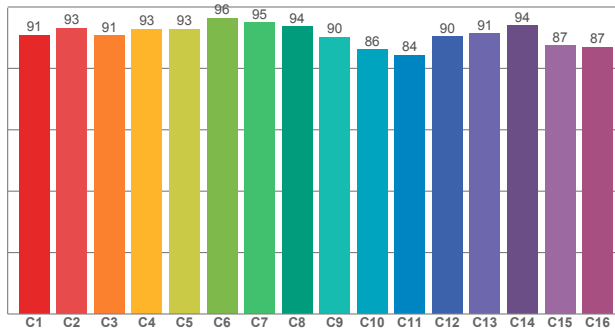


FLEX - PLUS 1900-4000

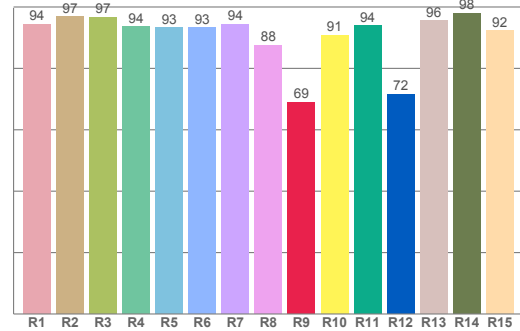
Led Strip



TM30: 90,7



CRI: 93,7 (R1-R8)



CRI R values, only R1-R8 are used to calculate final CRI value

R1	R2	R3	R4	R5	R6	R7	R8	R9	R10	R11	R12	R13	R14	R15
94,41	96,79	96,64	93,65	93,30	93,17	94,35	87,57	69,05	90,84	93,82	71,58	95,50	97,94	92,34

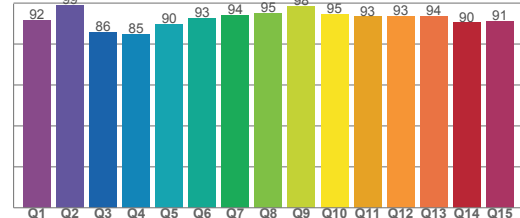
TM30 C values, 16 binned values out of total of 99 C values

C1	C2	C3	C4	C5	C6	C7	C8	C9	C10	C11	C12	C13	C14	C15	C16
90,82	93,12	90,71	92,78	92,77	96,37	94,85	93,56	90,17	86,10	84,33	90,28	91,30	93,85	87,31	86,96

CQS Q values

Q1	Q2	Q3	Q4	Q5	Q6	Q7	Q8	Q9	Q10	Q11	Q12	Q13	Q14	Q15
91,62	98,81	85,96	84,65	89,71	92,59	94,15	95,28	98,39	94,68	93,34	93,45	93,82	90,44	91,11

CQS: 91,6

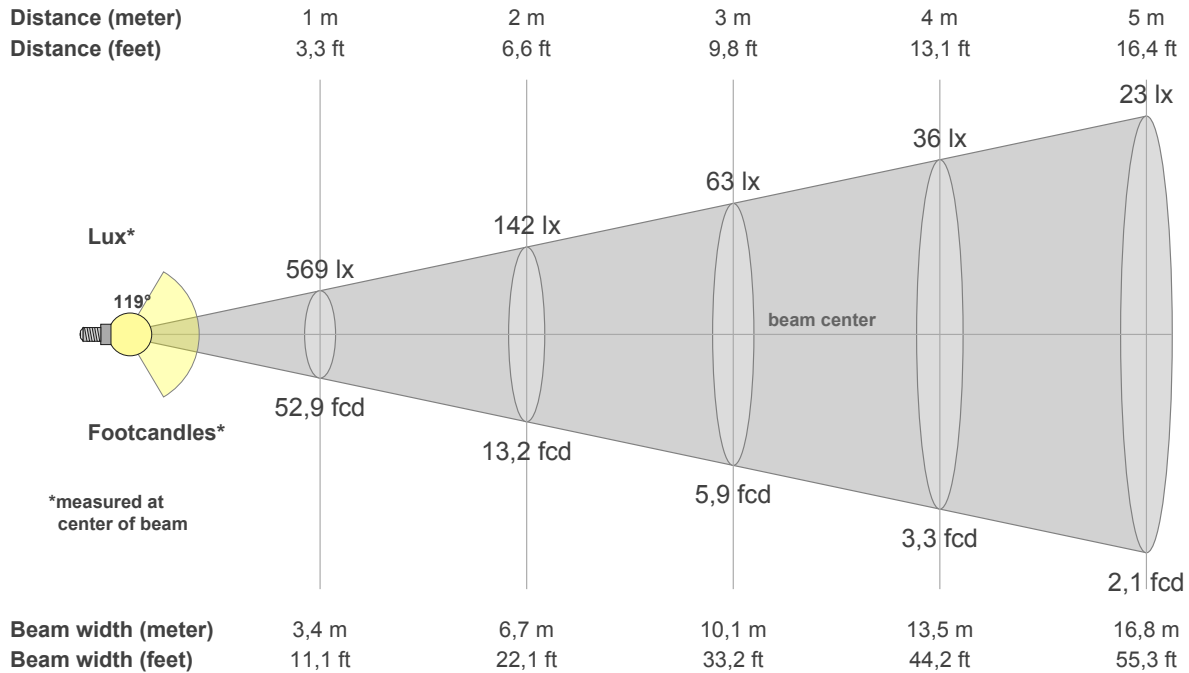


Color parameters

CCT	CRI	CRI R9	TM30 Rf	TM30 Rg	CQS	x	y	u	v	Duv
4210 K	93,7	69,0	90,7	98,9	91,6	0,4	0,4	0,2	0,3	-0,0014

FLEX - PLUS 1900-4000

Led Strip



Intensities in 0° c-plane

0°	5°	10°	15°	20°	25°	30°	35°	40°	45°	50°	55°	60°	65°	70°	75°	80°	85°	90°	95°
569	565	557	545	528	507	483	456	425	393	358	320	278	233	185	135	85	44	15	3
100%	99%	98%	96%	93%	89%	85%	80%	75%	69%	63%	56%	49%	41%	32%	24%	15%	8%	3%	1%

Intensities in 0° c-plane

0°	5°	10°	15°	20°	25°	30°	35°	40°	45°	50°	55°	60°	65°	70°	75°	80°	85°	90°	95°
569	565	557	545	528	507	483	456	425	393	358	320	278	233	185	135	85	44	15	3
100%	99%	98%	96%	93%	89%	85%	80%	75%	69%	63%	56%	49%	41%	32%	24%	15%	8%	3%	1%

Intensities in 180° c-plane

0°	5°	10°	15°	20°	25°	30°	35°	40°	45°	50°	55°	60°	65°	70°	75°	80°	85°	90°	95°
569	567	560	551	535	516	494	466	434	400	362	321	278	233	187	141	94	52	20	3
100%	100%	98%	97%	94%	91%	87%	82%	76%	70%	64%	56%	49%	41%	33%	25%	17%	9%	4%	1%

Intensities in 180° c-plane

0°	5°	10°	15°	20°	25°	30°	35°	40°	45°	50°	55°	60°	65°	70°	75°	80°	85°	90°	95°
569	567	560	551	535	516	494	466	434	400	362	321	278	233	187	141	94	52	20	3
100%	100%	98%	97%	94%	91%	87%	82%	76%	70%	64%	56%	49%	41%	33%	25%	17%	9%	4%	1%

Beam angle 50%	Field angle 10%	Cutoff angle 2,5%	Intensity ratio in 120° cone	Intensity ratio in 90° cone
118,6°	167,8°	181,9°	74,9%	50,0%